

# СОНАТИНЫ

для

*маленьких*

*и самых*

*маленьких*

*(фортепиано)*



*Составитель Азрилян А.*

Балашов – 2010



# Сонатина

Amabile

К. Вилтон

# Сонатина

Andante cantabile

Я. Ванхаль



Handwritten musical notation for the first system, consisting of a treble and bass clef staff. The treble staff contains a melodic line with fingerings (3, 3, 5, 4, 2, 5, 5, 5, 4, 1, 2, 4, 3, 5) and a dynamic marking of *p*. The bass staff contains a bass line with fingerings (5, 3, 5, 2, 5, 2, 4, 2, 3). A dashed line indicates a slur over the first two measures of the treble staff.

Handwritten musical notation for the second system, consisting of a treble and bass clef staff. The treble staff contains a melodic line with fingerings (2, 4, 5, 4, 2, 2, 3, 3, 4, 2, 5, 5, 5, 5, 4, 1) and a dynamic marking of *f*. The bass staff contains a bass line with fingerings (5, 2, 1, 4, 2, 5, 3, 5, 2, 5, 2, 5, 2). A dashed line indicates a slur over the first two measures of the treble staff.

Handwritten musical notation for the third system, consisting of a treble and bass clef staff. The treble staff contains a melodic line with fingerings (3, 2, 1, 4, 5, 3, 1, 3, 4, 2) and dynamic markings of *p dolce*, *pp*, and *f*. The bass staff contains a bass line with fingerings (3, 2, 1, 2, 3, 1, 2, 4, 2). A dashed line indicates a slur over the first two measures of the treble staff.

Handwritten musical notation for the fourth system, consisting of a treble and bass clef staff. The treble staff contains a melodic line with fingerings (3, 4, 5, 5, 5, 3, 4) and a dynamic marking of *p*. The bass staff contains a bass line with fingerings (5, 3, 1, 5, 2, 5, 2, 3, 2). A dashed line indicates a slur over the first two measures of the treble staff.

Handwritten musical notation for the fifth system, consisting of a treble and bass clef staff. The treble staff contains a melodic line with fingerings (3, 4, 2, 3, 4, 2, 5, 5, 5, 4, 1) and dynamic markings of *mf* and *f*. The bass staff contains a bass line with fingerings (5, 2, 4, 5, 5, 2, 5, 2). A dashed line indicates a slur over the first two measures of the treble staff.



# Сонатина

I

Vivace

В. Дамкомб

5

4

4



II

Tempo di minuetto

Musical score for piano, consisting of five systems of two staves each (treble and bass clef). The score includes various musical notations such as notes, rests, dynamics (f, mp, mf, p), articulation (>), and performance instructions (allarg.).

System 1: Treble clef starts with a 3/4 time signature. Bass clef has a forte (*f*) dynamic. Notes are marked with accents (>). Fingering numbers 4, 5, 4, 3 are shown above the treble staff.

System 2: Treble clef has a slur over the first two measures. Bass clef has a piano (*p*) dynamic. An *allarg.* (ritardando) instruction is present. Fingering numbers 5, 1, 1, 5, 4, 3, 2 are shown.

System 3: Treble clef has a mezzo-piano (*mp*) dynamic. Bass clef has a mezzo-forte (*mf*) dynamic. Fingering numbers 5, 4, 3, 2, 3, 4, 3, 2, 1 are shown.

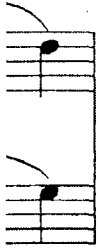
System 4: Treble clef has a forte (*f*) dynamic. Notes are marked with accents (>). Fingering number 4 is shown above the treble staff.

System 5: Treble clef has a slur over the first two measures. Bass clef has a slur over the first two measures. Fingering numbers 5, 4, 3, 5, 5, 3, 1 are shown.



III

Allegro



mp

cresc.

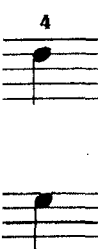


cresc.

pp

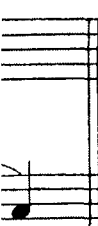


mp



mp

cresc.



cresc.



# Сонатина

Allegretto

А.Бейл

*p*

5 8 1 4 2 1 5 8 1 5 8 1 2 1 2 8 1 8

4 8 2 3 1 2 5 1 2 5 1 3 5

1 1 1 1 5 5 8 1 4 2 1 5 3 1 5 3 1

2 1 2 8 1 8 1 4 1 2 3 5 5 8 1 5 2 1

1 5 2 5 5 8 1 5 2 1 4 2 1



Бейл

Сонатина

Allegro moderato

Л.Кёхлер





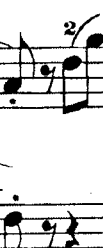
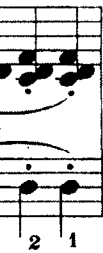
Musical notation system 1. Treble clef, key signature of one sharp (F#), 2/4 time signature. The system contains two staves. The right hand has a melody with various ornaments and fingerings (e.g., 2 3 2 1, 4, 2, 1 2, 1 2, 1 5, 4). The left hand has a bass line with fingerings (2, 3, 1, 2, 2, 4, 5, 3, 2, 1). Dynamics include *f*.

Musical notation system 2. Treble clef, key signature of one sharp (F#), 2/4 time signature. The system contains two staves. The right hand has a melody with fingerings (5, 1, 2, 3, 2, 1). The left hand has a bass line with fingerings (4, 2, 1, 3, 5, 2, 5). Dynamics include *p* and *mf*. A repeat sign is present.

Musical notation system 3. Treble clef, key signature of one sharp (F#), 2/4 time signature. The system contains two staves. The right hand has a melody with fingerings (1, 4, 5, 2, 4, 1, 4, 3, 2, 1). The left hand has a bass line with fingerings (2, 4, 3, 4, 2, 3). The word *legato* is written below the left hand.

Musical notation system 4. Treble clef, key signature of one sharp (F#), 2/4 time signature. The system contains two staves. The right hand has a melody with fingerings (5, 3, 2, 1, 2, 1, 4, 2). The left hand has a bass line with fingerings (3, 5, 4, 3, 2, 1, 5, 1, 5, 1, 4, 2, 3, 2). Dynamics include *p* and *f*.

Musical notation system 5. Treble clef, key signature of one sharp (F#), 2/4 time signature. The system contains two staves. The right hand has a melody with fingerings (2, 3, 2, 1, 2, 3, 5, 2). The left hand has a bass line with fingerings (5, 1, 3, 2). Dynamics include *p*.



2 3 2 1 2 1 2 5 1 2 1 5

2 3 1 2 4 5

4 4 5 1

3 2 1 4 2 1 3 5 1 2

# Сонатина

Andantino

Я. Ванхаль

3 5 4 2 1 2 5 3 2 1 1 1 1

*f* *p*

5 3 1 3 3 3

*legato*

2 2 2 3 5 1 5 2 3 3 5 4 2

1 1 1 5 2 1 5

*f*



2 5 3 2 1 2 3 2 4 3 4 2 3

8 5 3 1 1 5 1 5 1 5 1 2

1 2 1 2 1 2 3 4 3 5 4 2

*p* *f*

5 2 5 2 5 5 5

2 5 3 2 1 2 3 4 3 4 3

*p*

3 3 1 5 1 5 1 2

1 2 1 2 1 2 3 4 3 5 4 2

*p* *f*

5 2 5 2 5 5 5

2 5 3 2 1 1 2 3 4 3 4 3

3 3 1 5 1 5 1 2



# Сонатина

И.Плейель

Tempo di minuetto

3

1/2

3

1/2

3

1/2

3

1/2

*mf*

*legato*

*legato*

*Fine*

Trio

*p*



3 2 3 4 2 5 1 4 2 1 3 2

3 2 3 4 5 1 5 1 3 2

*p*

1 2 4 1 3 5 1 4 2 1 4 3 1 4 2 3 2

2 3 5 4 3 2 2 1 5 1 2 5

*Menuetto de capo al fine*

Rondo  
Poco allegretto

2 1 3 1 3 1 3 4 3 4

*p*

*leggiere*

2 3 4 5 3 5 4 3 4 3 2 3 2

5 3 1 5 3 1 2 2 4 4 2 1 1 4 4 2 1 1 4 4

*pp* *p*

2 1 5 2 3 1 3



8 2

5

4 1 3 5 2 3 5 2 1 2 1 3 1 3

2 5

4 3 2 3 1 3 1 3 1

*leggiere* *cresc.*

2 2 3 4 5 4 5 4 3 5 4

no al fine

3 4

3 4 3 2 3 2 2 2 1 1 5

*f* *p* *pp*

3 5 4 5 4 2 3 2 4 5 5 4 2

*f* *p*

1 4 4 5 4 3 1 5 1 3 2 5

2 4 5 5 4 2 3 1 5 4 2 3 1 2

*cresc.* *f*

1 3 5 1 2 3 4 5 4 1 5 3



# Сонатина

Allegretto

Д. ШМИТТ

*p* *mf* *cresc.* *mf.* *p*

*legato*

3 1 2 3 1 2 3 5 2 1 3 2 1 2 3 1 2 3 5  
 1 2 3 2 1 3 4 1 2 1 3 2 3 2 1 5  
 1 2 3 2 1 5 1 2 5 1 2 5 1 3 2 1  
 2 5 1 3 2 3 2 1 1 3 2 3 2 1 1 3 2 3 2 1

3 1 2 5 1 2 1 3 1 2 1 2 1 2 1 2 1 2 1 2



ШМИТТ

8 1 2 3 5

*f*

1

1 2 5 1 2 5 1 2 3 2 1 3 4 1 3 1 3 2 5

*mf*

5 1 3 1

5

1 2 4 1 2 4 3 2 1 2 8 8 2 1 2 3 5 1 2 2 1 2 3 5

5 5

8 2 1

1 2 2 1 4 5 1 5 1

5 4 3 2 4

# Сонатина

Allegro moderato

Э. Вагнер

8 2 1

1 3 5 1 3 5 4 3 2 1 2

*p*

5 3 1 3 2 1 2





First system of piano music. Treble clef staff contains a melodic line with slurs and fingerings (3, 4, 2, 5, 1, 3, 5). Bass clef staff contains a bass line with slurs and fingerings (4, 4, 5, 3, 1, 5, 2, 1). Dynamic marking *mf* is present.

Second system of piano music. Treble clef staff contains a melodic line with slurs and fingerings (4, 3, 2, 2, 4, 3, 1, 2, 3, 1, 1, 2, 4, 3, 2, 1, 3, 1, 2, 3, 1, 5, 4). Bass clef staff contains a bass line with slurs and fingerings (5, 4, 5, 4, 5, 2, 1). Dynamic marking *cresc.* is present.

Third system of piano music. Treble clef staff contains a melodic line with slurs and fingerings (1, 3, 1, 4, 3, 1, 2, 3, 4, 3, 2, 1, 3, 5, 4, 3, 2, 1). Bass clef staff contains a bass line with slurs and fingerings (5, 2, 1, 4, 3, 8, 5). Dynamic marking *p* is present.

Fourth system of piano music. Treble clef staff contains a melodic line with slurs and fingerings (4, 1, 2, 1, 2, 3, 5, 1, 2, 3, 5, 3). Bass clef staff contains a bass line with slurs and fingerings (1, 2, 3, 4, 5, 4, 3, 2, 1). Dynamic marking *cresc.* is present.

Fifth system of piano music. Treble clef staff contains a melodic line with slurs and fingerings (5, 4, 1, 2, 3, 1, 2, 4, 1, 2, 3, 5, 1, 2, 3, 5, 1). Bass clef staff contains a bass line with slurs and fingerings (1, 3, 1, 2, 5, 1). Dynamic marking *f* is present.



1 3 5  
2 1

1 3 5 4 3 1 2 4

*p* *cresc.*

3 1 3 5 4 3

*p*

1 3 5 4 3

*p*

4 3 2 1

*f*

3 3 4 2 1 3 4 5

*f*

5 2 4 3 2 1 3 4 5

*cresc.*

5 4 3 2 1 3 4 5 1 2 3 4 5 1 2 3

*cresc.*

5 4 3 2 1 3 4 5 1 2 3 4 5 1 2 3

*cresc.* *f*

4 4 3 2 1 3 1 2 3 1 2 4 3 5 1 2 3 3 3

*cresc.* *f*